

INDEX

STREETS	NUMBER	STREET	NUMBER
A	Union	U	6, 7 & 8
A	Acme	A	1 & 2
A	Acutney	A	1 & 2
B	Baxter Lane, see Mechanic Ave.		
B	Bridges	B	1-30
B	Buena Vista, see Front Ave.		
B	Court	B	7
C	Cemetery Road	C	8
C	Central Ave.	C	1-54
C	Cherry	C	1-35
C	Clough Ave.	C	2-36
C	Coolidge Court	C	1-21
C	Court	C	2-22
C	Crystal	C	8
D	Depot Ave.	D	2
D	Durfee	D	1-19
D		D	2-20
D		D	21-50
E	Elm	E	8
E	Everett Lane	E	8
F	Farnsworth Court	F	1
F	Fitch Court	F	1
F	Front	F	7
J	Jacobs	J	2
J	Jarvis Court	J	2
M	Main	M	1-52
M		M	53-126
M		M	127-158
M		M	159-187
M		M	188-207
M	Maple	M	1-24
M		M	25-38
M	Mechanic Ave.	M	3 & 6
N	National	N	5
P	Phelps Court	P	2
P	Pine	P	2
P	Pleasant	P	8
R	River	R	1-37
R		R	2-24
R		R	25-36
R		R	37-53
S	State	S	1-34
S		S	35-88
S		S	89-129
S		S	130-136
S		S	137-154
T	Terrace	T	8
U	Union	U	6, 7 & 8
W	Well	W	6

SPECIALS

A	All Souls Unitarian Church	A	8
B	Baptist Church	B	4
B	Baxter, H. C. & Bro., Canning Factory	B	4
B	B. & M. R. R. Depots, &c.	B	3
C	Cone Automatic Machine Co.	C	8
C	Court House	C	3
E	Episcopal Church	E	3
F	Fire Department	F	4
G	Gem, The, Moving Picture Theatre	G	6
H	Harlow, R. S., Meth. Episc. Church	H	4
K	Kennedy, F. A., Buena Vista Saw Mill Building	K	6
M	Manchester Vt. Dairy Co.	M	4
M	Martin, A. W., Sash, Blinds and Wooden Boxes M'f'g.	M	2
M	Morrill, H. E., Woodworking	M	7
N	National Acme Co., Machine Shop	N	5
O	Old South Church, (Congregational)	O	4
P	Post Office	P	3
P	Public School, Court St.	P	3
R	Rachel S. Barlow Meth. Episc. Church	R	4
R	Roman Catholic Church	R	7
S	South Primary School	S	6
S	State National Bank Building	S	2
S	Prison	S	1
S	Street School	S	1
T	Town Hall	T	3
W	Windsor Club Inn	W	6
W	Elec. Co., Electric Light Sta.	W	6
W	House	W	3
W	Library	W	2
W	Savings Bank Building	W	2
W	Steam Laundry	W	6

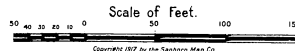
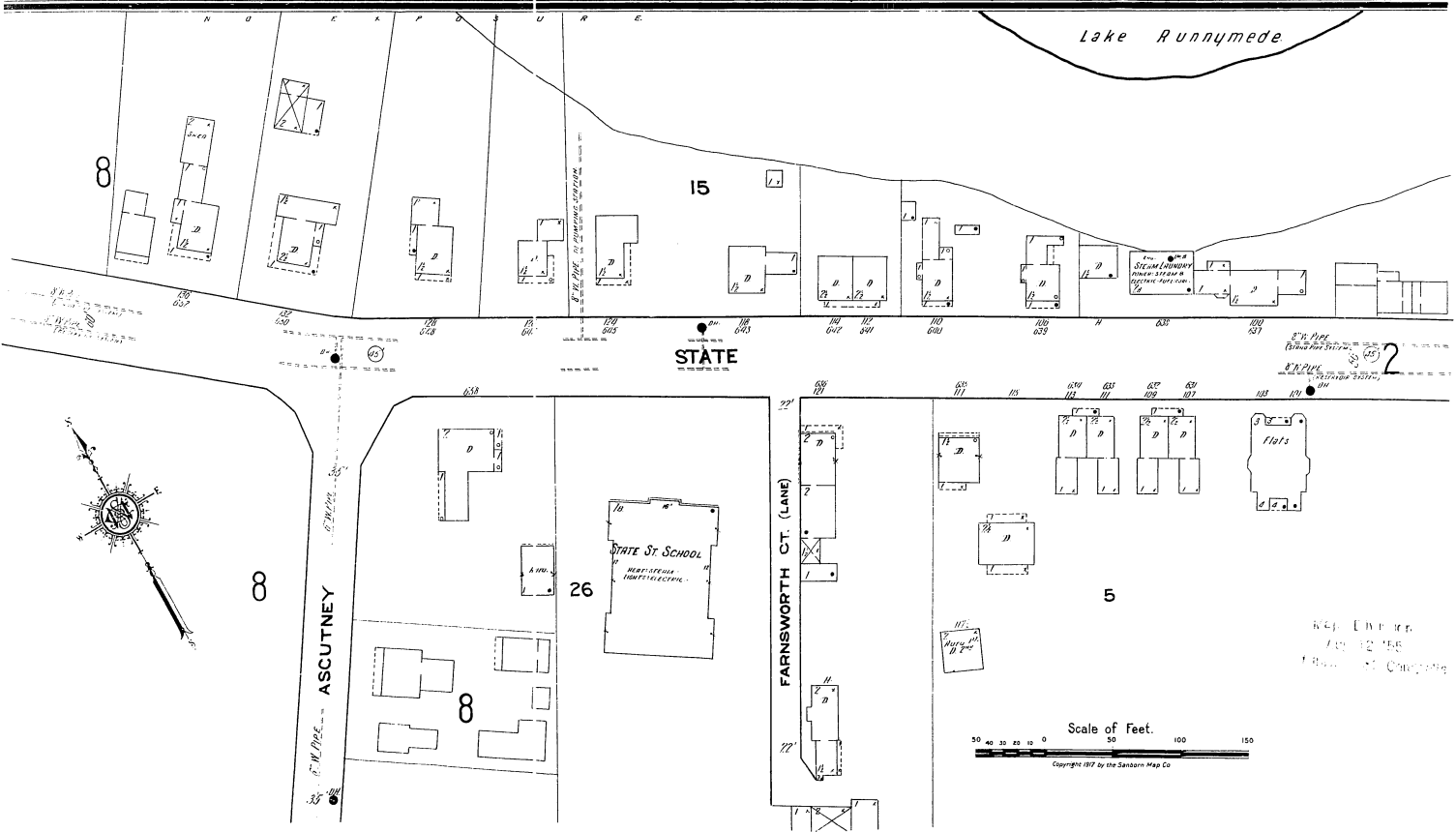
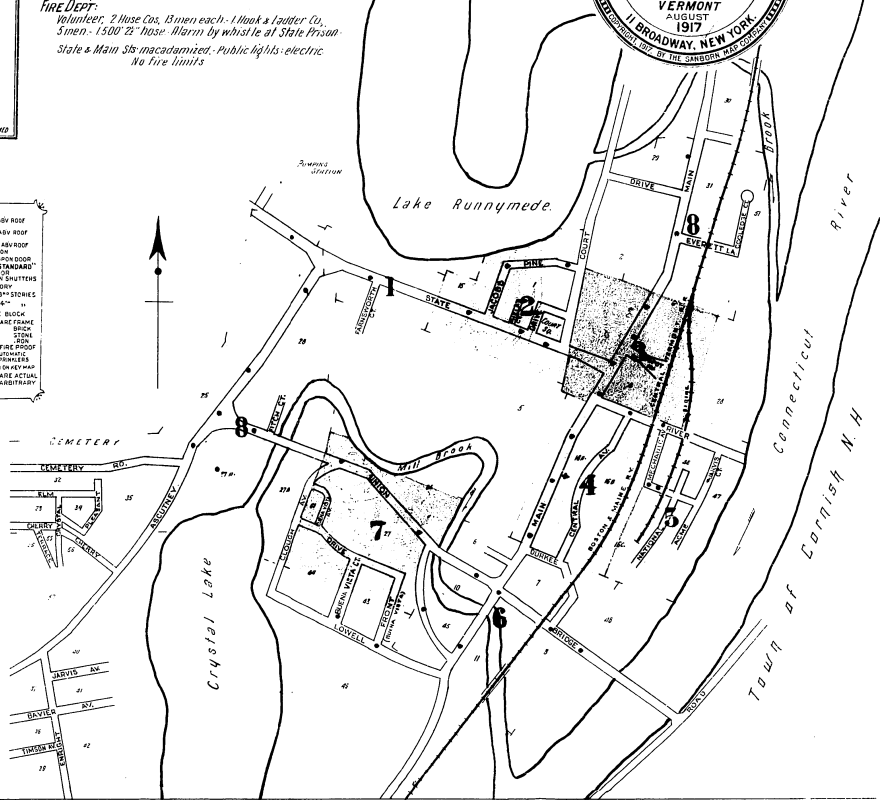
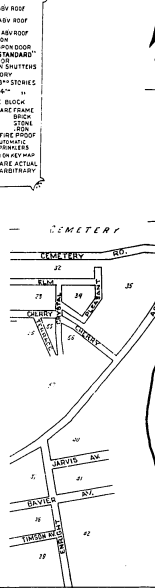
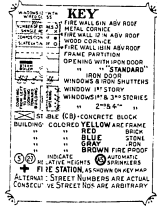
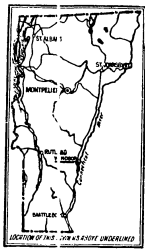
* Indicates only one side of Street shown.

WATER FACILITIES:

Gravity & stored system of Water Works, constructed in 1885. Supply from springs, averaged to a 720,000 gal. stand pipe by 14 in. dia. - 100 ft. garden to steam pump capacity 200 gals. per minute. Motor electric pump capacity 200 gals. per minute. Kingsford electric pump capacity 300 gals. per minute. Village reservoir capacity 1/2 million gallons stand pipe by 8" water pipes. 33 hydrants. Pressure in business district 85 lbs. per sq. inch. 3 hydrants supplied from sub reservoir system, reservoir located Lake Mendon Post Office. Connected with village mains with an 8" pipe.

FIRE DEPT:

Volunteer, 2 Hose Cos. 13 men each - 1 Hook & Ladder Co. 5 men - 1500' 2" hose. Alarm by whistle at State Prison. State & Main Sts. macadamized. Public lights - electric. No fire limits.



Copyright 1917 by the Sanson Map Co.