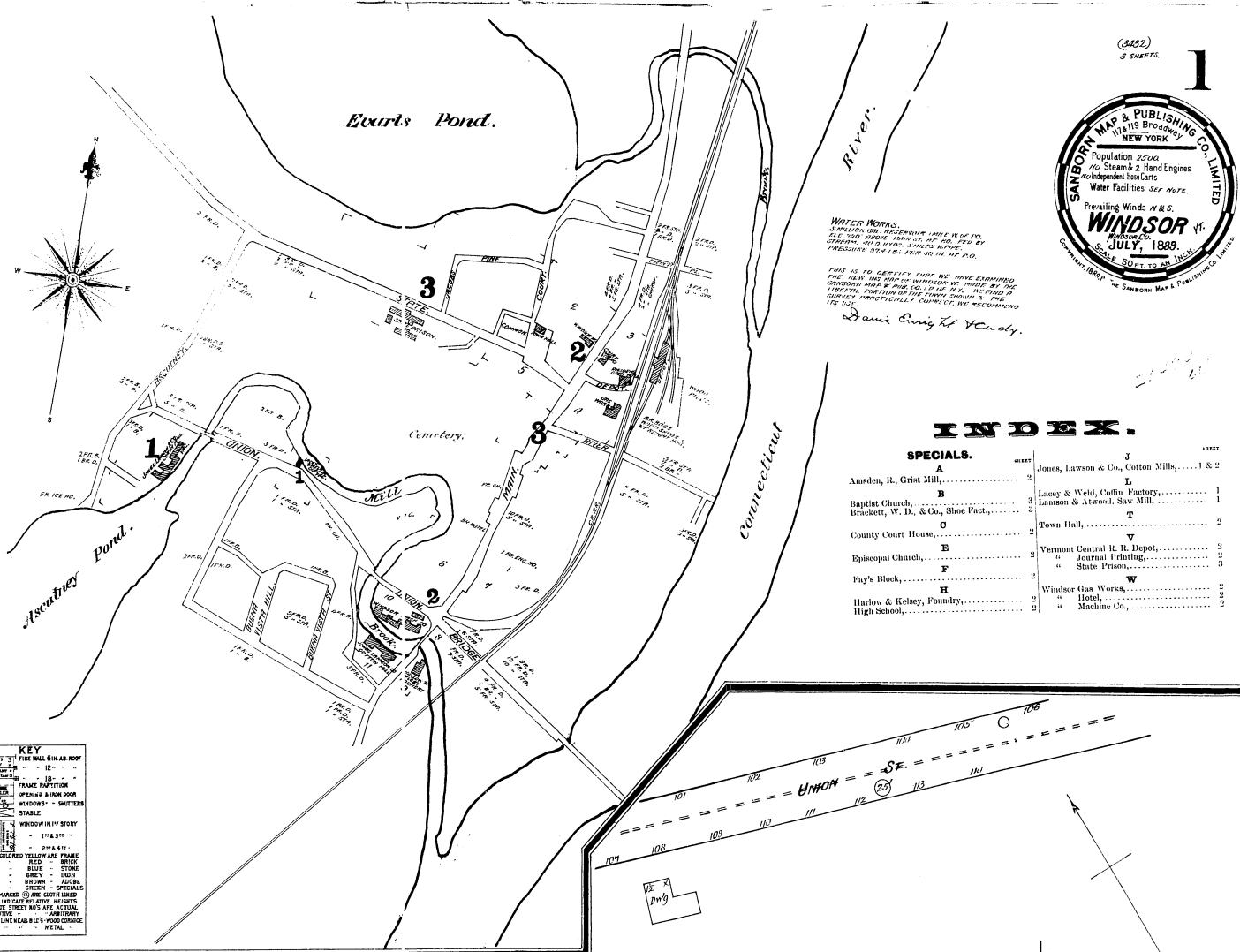


WATER WORKS.
ON DESIGN FOR DEPRESSURE MADE IN 1887.
THE 200 HORSE POWER OF THE MILL BY THE
STREAM, WITH 1000 FEET HEAD, BY
PRESSURE OF 4 LBS. PER SQ. IN. OF W.G.
THIS IS TO CERTIFY THAT WE HAVE EXAMINED
THE DESIGN AND PLAN OF WATER WORKS FOR THE
CONNECTION MADE BY THE CO. IN 1887. THE PLAN IS
THE BEST FOR THE PURPOSES OF THE STREAM IN THE
CONNECTION MADE BY THE CO. IN 1887. WE RECOMMEND
THE DESIGN.

Davis Wright & Co.

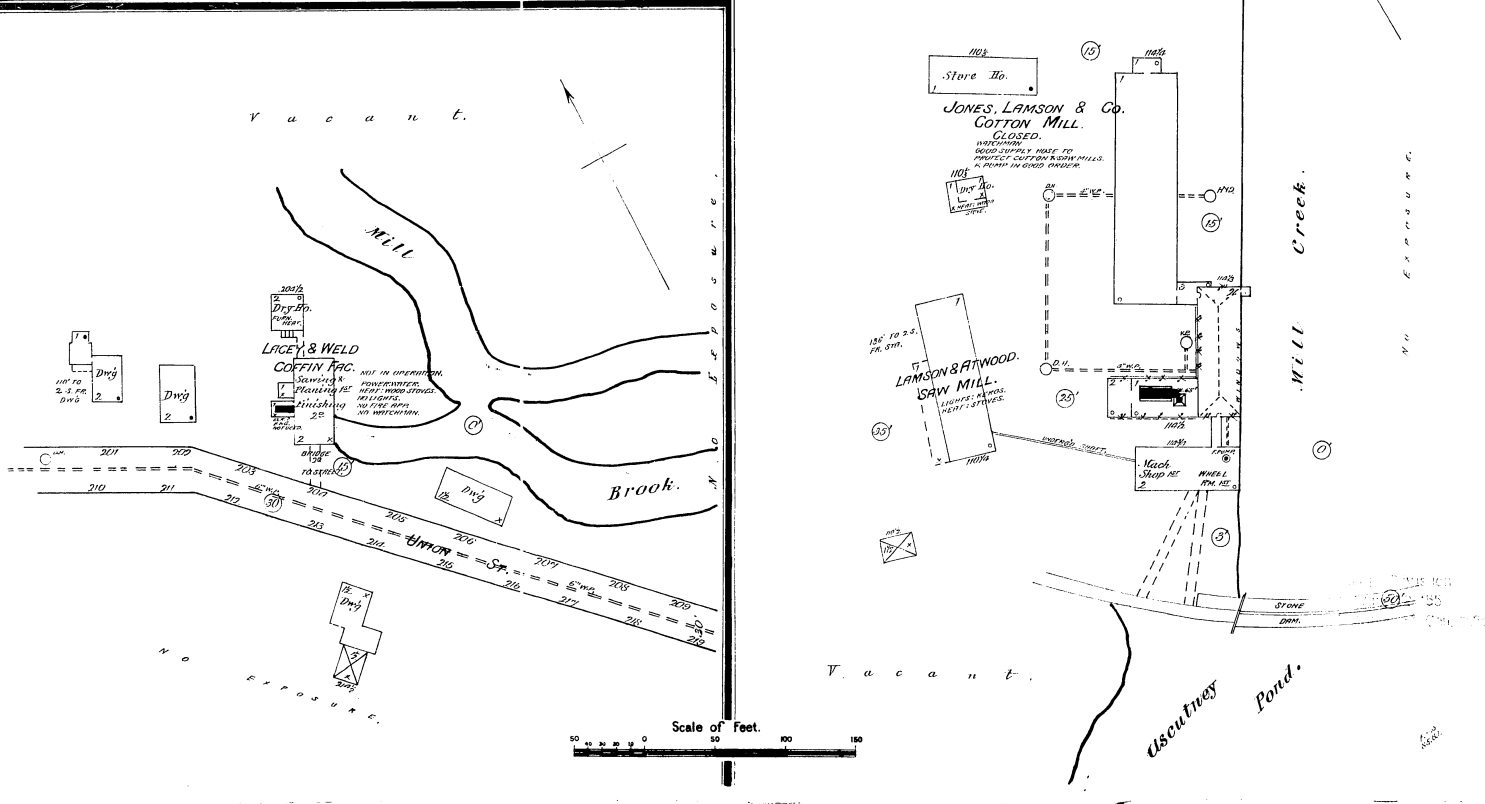


KEY

—	FIRE WALL OR AS ROOF
—	FRAME PARTITION
—	FRAMES & IRON DOOR
—	WINDOWS - SAUTTERS
—	STABLE
—	WINDOW IN 1ST STORY
—	— 2ND & 3RD
—	— 4TH & 5TH
—	— 6TH & 7TH
—	— 8TH & 9TH
—	— 10TH & 11TH
—	— 12TH & 13TH
—	— 14TH & 15TH
—	— 16TH & 17TH
—	— 18TH & 19TH
—	— 20TH & 21TH
—	— 22TH & 23TH
—	— 24TH & 25TH
—	— 26TH & 27TH
—	— 28TH & 29TH
—	— 30TH & 31TH
—	— 32TH & 33TH
—	— 34TH & 35TH
—	— 36TH & 37TH
—	— 38TH & 39TH
—	— 40TH & 41TH
—	— 42TH & 43TH
—	— 44TH & 45TH
—	— 46TH & 47TH
—	— 48TH & 49TH
—	— 50TH & 51TH
—	— 52TH & 53TH
—	— 54TH & 55TH
—	— 56TH & 57TH
—	— 58TH & 59TH
—	— 60TH & 61TH
—	— 62TH & 63TH
—	— 64TH & 65TH
—	— 66TH & 67TH
—	— 68TH & 69TH
—	— 70TH & 71TH
—	— 72TH & 73TH
—	— 74TH & 75TH
—	— 76TH & 77TH
—	— 78TH & 79TH
—	— 80TH & 81TH
—	— 82TH & 83TH
—	— 84TH & 85TH
—	— 86TH & 87TH
—	— 88TH & 89TH
—	— 90TH & 91TH
—	— 92TH & 93TH
—	— 94TH & 95TH
—	— 96TH & 97TH
—	— 98TH & 99TH
—	— 100TH & 101TH
—	— 102TH & 103TH
—	— 104TH & 105TH
—	— 106TH & 107TH
—	— 108TH & 109TH
—	— 110TH & 111TH
—	— 112TH & 113TH
—	— 114TH & 115TH
—	— 116TH & 117TH
—	— 118TH & 119TH
—	— 120TH & 121TH
—	— 122TH & 123TH
—	— 124TH & 125TH
—	— 126TH & 127TH
—	— 128TH & 129TH
—	— 130TH & 131TH
—	— 132TH & 133TH
—	— 134TH & 135TH
—	— 136TH & 137TH
—	— 138TH & 139TH
—	— 140TH & 141TH
—	— 142TH & 143TH
—	— 144TH & 145TH
—	— 146TH & 147TH
—	— 148TH & 149TH
—	— 150TH & 151TH
—	— 152TH & 153TH
—	— 154TH & 155TH
—	— 156TH & 157TH
—	— 158TH & 159TH
—	— 160TH & 161TH
—	— 162TH & 163TH
—	— 164TH & 165TH
—	— 166TH & 167TH
—	— 168TH & 169TH
—	— 170TH & 171TH
—	— 172TH & 173TH
—	— 174TH & 175TH
—	— 176TH & 177TH
—	— 178TH & 179TH
—	— 180TH & 181TH
—	— 182TH & 183TH
—	— 184TH & 185TH
—	— 186TH & 187TH
—	— 188TH & 189TH
—	— 190TH & 191TH
—	— 192TH & 193TH
—	— 194TH & 195TH
—	— 196TH & 197TH
—	— 198TH & 199TH
—	— 200TH & 201TH
—	— 202TH & 203TH
—	— 204TH & 205TH
—	— 206TH & 207TH
—	— 208TH & 209TH
—	— 210TH & 211TH
—	— 212TH & 213TH
—	— 214TH & 215TH
—	— 216TH & 217TH
—	— 218TH & 219TH
—	— 220TH & 221TH
—	— 222TH & 223TH
—	— 224TH & 225TH
—	— 226TH & 227TH
—	— 228TH & 229TH
—	— 230TH & 231TH
—	— 232TH & 233TH
—	— 234TH & 235TH
—	— 236TH & 237TH
—	— 238TH & 239TH
—	— 240TH & 241TH
—	— 242TH & 243TH
—	— 244TH & 245TH
—	— 246TH & 247TH
—	— 248TH & 249TH
—	— 250TH & 251TH
—	— 252TH & 253TH
—	— 254TH & 255TH
—	— 256TH & 257TH
—	— 258TH & 259TH
—	— 260TH & 261TH
—	— 262TH & 263TH
—	— 264TH & 265TH
—	— 266TH & 267TH
—	— 268TH & 269TH
—	— 270TH & 271TH
—	— 272TH & 273TH
—	— 274TH & 275TH
—	— 276TH & 277TH
—	— 278TH & 279TH
—	— 280TH & 281TH
—	— 282TH & 283TH
—	— 284TH & 285TH
—	— 286TH & 287TH
—	— 288TH & 289TH
—	— 290TH & 291TH
—	— 292TH & 293TH
—	— 294TH & 295TH
—	— 296TH & 297TH
—	— 298TH & 299TH
—	— 300TH & 301TH
—	— 302TH & 303TH
—	— 304TH & 305TH
—	— 306TH & 307TH
—	— 308TH & 309TH
—	— 310TH & 311TH
—	— 312TH & 313TH
—	— 314TH & 315TH
—	— 316TH & 317TH
—	— 318TH & 319TH
—	— 320TH & 321TH
—	— 322TH & 323TH
—	— 324TH & 325TH
—	— 326TH & 327TH
—	— 328TH & 329TH
—	— 330TH & 331TH
—	— 332TH & 333TH
—	— 334TH & 335TH
—	— 336TH & 337TH
—	— 338TH & 339TH
—	— 340TH & 341TH
—	— 342TH & 343TH
—	— 344TH & 345TH
—	— 346TH & 347TH
—	— 348TH & 349TH
—	— 350TH & 351TH
—	— 352TH & 353TH
—	— 354TH & 355TH
—	— 356TH & 357TH
—	— 358TH & 359TH
—	— 360TH & 361TH
—	— 362TH & 363TH
—	— 364TH & 365TH
—	— 366TH & 367TH
—	— 368TH & 369TH
—	— 370TH & 371TH
—	— 372TH & 373TH
—	— 374TH & 375TH
—	— 376TH & 377TH
—	— 378TH & 379TH
—	— 380TH & 381TH
—	— 382TH & 383TH
—	— 384TH & 385TH
—	— 386TH & 387TH
—	— 388TH & 389TH
—	— 390TH & 391TH
—	— 392TH & 393TH
—	— 394TH & 395TH
—	— 396TH & 397TH
—	— 398TH & 399TH
—	— 400TH & 401TH
—	— 402TH & 403TH
—	— 404TH & 405TH
—	— 406TH & 407TH
—	— 408TH & 409TH
—	— 410TH & 411TH
—	— 412TH & 413TH
—	— 414TH & 415TH
—	— 416TH & 417TH
—	— 418TH & 419TH
—	— 420TH & 421TH
—	— 422TH & 423TH
—	— 424TH & 425TH
—	— 426TH & 427TH
—	— 428TH & 429TH
—	— 430TH & 431TH
—	— 432TH & 433TH
—	— 434TH & 435TH
—	— 436TH & 437TH
—	— 438TH & 439TH
—	— 440TH & 441TH
—	— 442TH & 443TH
—	— 444TH & 445TH
—	— 446TH & 447TH
—	— 448TH & 449TH
—	— 450TH & 451TH
—	— 452TH & 453TH
—	— 454TH & 455TH
—	— 456TH & 457TH
—	— 458TH & 459TH
—	— 460TH & 461TH
—	— 462TH & 463TH
—	— 464TH & 465TH
—	— 466TH & 467TH
—	— 468TH & 469TH
—	— 470TH & 471TH
—	— 472TH & 473TH
—	— 474TH & 475TH
—	— 476TH & 477TH
—	— 478TH & 479TH
—	— 480TH & 481TH
—	— 482TH & 483TH
—	— 484TH & 485TH
—	— 486TH & 487TH
—	— 488TH & 489TH
—	— 490TH & 491TH
—	— 492TH & 493TH
—	— 494TH & 495TH
—	— 496TH & 497TH
—	— 498TH & 499TH
—	— 500TH & 501TH

INDEX.

SPECIALS.	INDEX
A	Jones, Lawson & Co, Cotton Mills, . . . 1 & 2
B	Lacey & Weld, Coffin Factory, . . . 1
C	Lamson & Atwood, Saw Mill, . . . 1
D	Town Hall, . . . 2
E	Vermont Central R. R. Depot, . . . 2
F	Journal Printing, . . . 2
G	State Prison, . . . 3
H	Fay's Block, . . . 3
I	Windsor Gas Works, . . . 3
J	Hotel, . . . 3
K	Machine Co., . . . 3



Scale of Feet.
0 50 100 150